

AUTUMN / WINTER

2024-2025

THE  
ROSE  
THEATRE

Home of

THE  
NONENTITIES  
*Society*



THE ROSE THEATRE | KIDDERMINSTER  
BOX OFFICE: 01562 743745 | [www.rosetheatre.co.uk](http://www.rosetheatre.co.uk)

# GREETINGS FROM THE CHAIR OF THE NONENTITIES SOCIETY

## *Hello there.*

Once again it is the Rose's privilege to bring a new programme of entertainment to the Wyre Forest.

Last year was one of our most successful in recent times, both on and off the stage, our performances regularly getting 5\* reviews and playing to sellout audiences.

Our season starts with the excellent "Home I'm Darling" by Laura Wade, Michael Frayn's tense "Copenhagen" exploring the race for the atom bomb, the hilarious "A Tomb with a View" and the thriller "The Turn of the Screw" which sees us working with members of our Youth Theatre in our main cast once again. KRYPT will be entertaining us with their Christmas show in December followed by the Nonentities own Christmas Entertainment.

For the second half of our season we have the little gem "Educating Rita" embedded between the brilliant "The Incident Room",

which explores the police investigation and biggest manhunt ever held in the UK (the search for The Yorkshire Ripper) and "Murder Margaret and Me", telling of the unlikely friendship that developed between Agatha Christie and Margaret Rutherford, who first breathed life into Miss Marple and the season is rounded off with the ever popular "Porridge". Details of these plays can be found on our website.

As always, we try to bring a range of other acts and we have some familiar faces amongst our music programme and of course, we are looking forward to the return of all our regular partnerships, KODS, Carpet Trades, KODYS & Talking Props, who continue to provide high quality and affordable musical theatre for your enjoyment.

It promises to be another great season building on last year's success and we're looking forward to seeing you again.

**Bob Graham**  
Chair of The Nonentities Society

*Throughout this booklet*

*(A) denotes an Amateur production (P) denotes a Professional production*

*Cover photographs by Colin Hill*

Monday 9<sup>th</sup> September - Saturday 14<sup>th</sup> September

## HOME, I'M DARLING

By Laura Wade

The Nonentities Society – Main House (A)

What a season opener we have for you – winner of the 2019 Olivier Award for best new comedy, Home, I'm Darling is a thought provoking funny and extremely enjoyable play. Every marriage needs a little fantasy to keep it sparkling. But behind the gingham curtains, being a domestic goddess isn't as easy as it looks... Home, I'm Darling is Laura Wade's new dark comedy about sex, cake and the quest to be the consummate 1950's housewife.

Judy seems to be the ideal housewife - a true domestic goddess. Despite living in the 21st century, she presides over a perfect 1950s-style home, which she shares with her husband. Her friends approve of the frocks while Judy's mother is infuriated at such blinkered nostalgia, but the fantasy has progressed far beyond a flippant game. Woman cannot live on saccharine sweetness alone though, and that immaculate vintage veneer is showing signs of cracking.

Mild adult themes

★ 7:30pm ₤ Standard Ticket Prices

Saturday 14<sup>th</sup> September 10am – 2pm

## OPEN DAY AT THE ROSE THEATRE

*This is the day we open our doors – including those to the wardrobe, the tech box, the props room and the workshop! You might be a regular patron and want to know how we put on our incredible shows or new to the area and want a new hobby. Interested? Then join us for a guided tour of our lovely theatre and meet our friendly members. Perhaps you are considering joining us and would like to tread the boards as an actor, help build the sets or be a front of house volunteer. Come and have a chat and find out how to do it. We are particularly keen to recruit anyone with technical skills – any sound or lighting experts out there? The theatre will be a hive of activity with KRYPT, our youth group, having its regular session and preparations to get our theatre ready for the closing night of Home I'm Darling! Turn up any time between 10am and 2pm and enjoy free refreshments and a warm welcome!*



Friday 20<sup>th</sup> September – Saturday 21<sup>st</sup> September

## BROADWAY TO BROADWATERS

Kidderminster Operatic and Dramatic Society

Main House (A)

Following the success of its most recent sell-out show, The Hunchback of Notre Dame, Kidderminster Operatic and Dramatic Society are proud to present their upcoming concert, 'Broadway to Broadwaters'; a leap into the exciting and expansive world of musical theatre and performing arts that will certainly leave you spellbound!

Come and see a range of mesmerising performers singing the songs they hold dear. The lights of Broadway will dazzle the Horsefair streets in a way you've never seen at an event not to be missed!

7:30pm

Full £12 Under 16 £10



Friday 27<sup>th</sup> – Saturday 28<sup>th</sup> September

## FLEETWOOD MACHINE

Main House (P)

Celebrating the music of Fleetwood Mac. A lovingly crafted, musically authentic and passionately performed celebration of one of the greatest bands in history, Fleetwood Mac!

Fleetwood Machine stay true to the spirit and sound of the original music, replicating the unique sounds of Lindsey Buckingham & Peter Green's guitars, the intricate drum patterns of Mick Fleetwood and the haunting vocal harmonies that are Fleetwood Mac's trademark...not forgetting the iconic 'F1' bass line, of course!

All of the beloved mega-hits plus some brilliant, less well-known songs from the Peter Green era to excite even the most discerning fans!

"We want to convey to our audiences the pure joy and excitement we feel when performing this music. Looking forward to sharing some 'Big Love' with you all!" The show is performed by five experienced musicians who have found each other through their passion for one of the greatest bands in history.

7:30pm

Full £20 Concession £19



Saturday 5<sup>th</sup> October

## 'TO BE LOVED' ADELE

Main House (P)

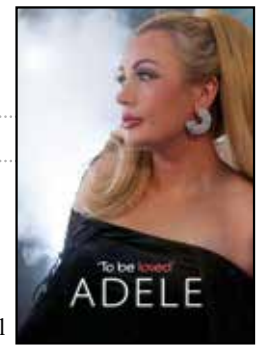
Come and enjoy an evening of dazzling hits from all four of Adele's record-breaking albums, performed by the sensational Chloe Barry. With her bubbly personality and soulful vocals, Chloe delivers an authentic and unforgettable performance. Featuring hits like "Someone Like You," "Rolling in the Deep," "Hello," and "Easy on Me," Chloe also covers songs by Adele's idols, creating a truly unique experience. Adele fans will adore this show and be left wanting more! Celebrate the music of one of the most influential singer-songwriters of our time.

Accompanied by piano and fabulous backing singers, this will be an evening to remember.

Don't miss it!

7:30pm

Full £22 Concession £20



Monday 14<sup>th</sup> October – Saturday 19<sup>th</sup> October

## 9 TO 5

Music and Lyrics by Dolly Parton / Book by Patricia Resnick

Carpet Trades Musical Theatre Company –

Main House (A)

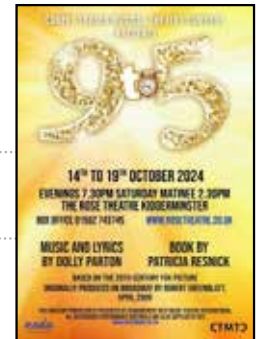
Based on the 20th Century Fox Picture originally produced on Broadway by Robert Greenblatt, April 2009

With a rip-roaring score by the Queen of Country, **9 to 5 the Musical** tells the story of three workmates pushed to boiling point by their sexist and egotistical boss. Concocting a plan to kidnap and turn the tables on their despicable supervisor, will the ladies manage to reform their office - or will events unravel when the CEO pays an unexpected visit? Inspired by the iconic 80's film and brought to you by Dolly Parton herself, this hilarious new production is about teaming up, standing up and taking care of business.

This amateur production is presented by arrangement with Music Theatre International. All authorised performance materials are also supplied by MTI [www.mtishows.co.uk](http://www.mtishows.co.uk)

7.30pm evening  
2.30pm matinee

Evenings £17 Matinee £16



Friday 25th October

## A DOUBLE BILL OF HORROR

Two One Act plays by ALAN BIRCH

Performed by The Clockwork Monkey Theatre Group

Main House (P)

### WHEN HELL BREAKS LOOSE

Disenchanted with working for other people, Steve Fletcher decides to turn to the more lucrative life of crime. Burglary is proving to be much more exciting than his previous job as a delivery driver and so far everything has been going well. Tonight, his luck is about to change. The old house on Meddins Drive has a terrifying history and Steve is about to discover what it is.

### THE VAMPYRE OF HUNTLEY CROSS

Miss Colburn lives alone in a beautiful cottage in a small village hidden in the depths of the Shropshire countryside. As a foster carer for stray dogs, she takes them in and cares for them until they can be found their 'forever' home. Following a brief on-line conversation a potential owner is invited to meet a lurcher called Harvey. As the meeting progresses, dark secrets are revealed and what started out as a perfectly innocent encounter gradually takes on a more sinister turn.

Caution: Not suitable for people of a nervous disposition.

★ 8:00pm £ Full £14 Concession £13



Monday 25th November – Saturday 30th November

## A TOMB WITH A VIEW

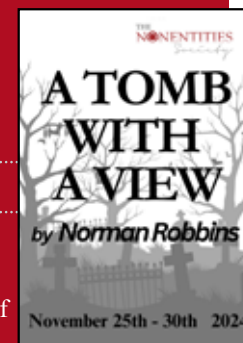
By Norman Robbins

The Nonentities Society - Main House (A)

A Tomb with A View is set in as sinister an old library as one is likely to come across presided over by a portrait of a grim faced, mad eyed old man. There, a dusty lawyer reads a will (involving some millions of pounds) to an equally sinister family - one member of which has were wolf tendencies, another wanders around in a toga of Julius Caesar and a third member is a gentle old lady who plants more than seeds in her flower beds.

By the third act, there are more corpses than live members left in the cast. What about the sympathetic nurse and the author of romantic novels? Are they all, or more than, they seem to be? All is revealed as the plot twists and turns to its surprising conclusion.

★ 7:30pm £ Standard Ticket Prices



Monday 28th October – Saturday 2nd November

## COPENHAGEN

By Michael Frayn

The Nonentities Society - Studio (A)

Our first studio offering is a blistering thriller which will leave you with more questions than answers; history, morality and quantum physics collide.

In 1941, German physicist Werner Heisenberg goes to Copenhagen to see his Danish counterpart, Niels Bohr. Together they revolutionized atomic science in the 1920s, but now they are on opposite sides of a world war. In this incisive drama by the prominent British playwright, which premiered at the Royal National Theatre in London and opened to rave reviews on Broadway (ultimately winning the 2000 Tony Award for Best Play), the two men meet in a situation fraught with danger in hopes of discovering why we do what we do.

★ 7:30pm £ Standard Studio Ticket Prices



Saturday 14th December – Sunday 15th December

## SHERLOCK HOLMES AND THE TWELVE CRIMES OF CHRISTMAS

By Rebecca Wilbrooke

KRYPT Senior and Junior groups

Main House (A)

It may be Christmas, but there's no such thing as a silent night for famed detective, Sherlock Holmes! When Victorian London finds itself flung into a frenzy of festive felonies, only one fellow has the fine-tuned faculties to figure out the fiendish fiasco of the Twelve Crimes of Christmas! What fun!

Our Junior and Senior groups come together to perform the annual show from KRYPT - Kidderminster Rose Young People's Theatre – do come and enjoy their festive offering!

★ 7.30pm Saturday 2.30pm Sunday £ Adult £10 Children under 16 £7



Tuesday 17th December – Friday 20th December

## CHRISTMAS ENTERTAINMENT

The Nonentities Society - Main House (A)

We invite you once again to join us in a night of music and mirth, merriment and mayhem to celebrate Christmas. A firm favourite on the Nonentities calendar, we look forward to seeing our regular patrons and welcoming first timers.

After a varied evening of songs, sketches and reflection you are welcome to partake in a glass of mulled wine and mince pie – included in your ticket price. These nights often sell out quickly so do book early and reserve your favourite seat!

★ 7:30pm    £ Standard Ticket Prices

Monday 27th January – Saturday 1st February

## THE TURN OF THE SCREW

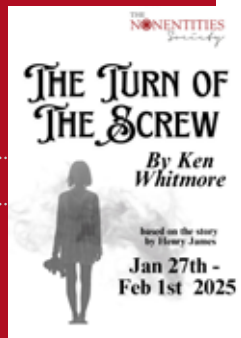
Adapted from the novel by Henry James by Ken Whitmore

The Nonentities Society - Main House (A)

A classic re-telling of the Henry James Victorian Ghost story – perfect for a winter's evening!

Shortly after Miss Grey, a governess, arrives at Bly to take charge of Flora and Miles she sees the ghosts of the former valet and governess; it is the children they want. She determines to save the children from destruction and damnation at the hands of these “devils”, but her courageous efforts are not enough to save little Miles from tragedy.

★ 7:30pm    £ Standard Ticket Prices



BEWDLEY FESTIVAL  
of the Arts  
OCTOBER 2024

18 Events from Friday 11<sup>th</sup> October



Music ★ Drama ★ Exhibitions  
Talks ★ Poetry ★ Comedy ★ Visual Arts  
<https://bewdleyfestival.org.uk>



Dogs Welcome  
Warm and friendly

### WE'RE OPEN

Tuesday - Thursday 4pm - 9pm  
Friday, Saturday 12pm - 9pm  
Sunday 12pm - 3pm

Facebook: @bewdleybrewerytap

Instagram: the\_bewdleybrewery\_tap



Dairy Products  
Since 1926



01905 748 150



# FOR YOUR ENJOYMENT AT THE ROSE

## ROSE THEATRE STAFF

We now have a part-time venue manager, Sharon Tandy. However, all other roles continue to be staffed by volunteer members - this includes all Office roles, Box Office, Bar and Front of House staff. If you would like to join us and be involved in any of our supporting roles, please have a look at the Get Involved section on our website. Ask for an application form at the Box Office. Alternatively, e-mail your details to [admin@rosetheatre.co.uk](mailto:admin@rosetheatre.co.uk) and we will get back to you.

## ARRIVAL TIMES

Please don't arrive at the Theatre before 6.30 our volunteers need time to get ready for you! Our Refreshment area selling drinks, sweets and ice cream and our well-stocked Bar will be open from 6.45. Enjoy drinks before and during the interval. Most nights our Bar is open after the show.

## PARKING

Do allow sufficient time for parking in the Free Car Park on Broadwaters Drive – latecomers cannot be admitted until a suitable break in the performance. Please respect our neighbours and park considerately, allowing access to driveways, particularly on Broadwaters Drive. Do not park in the spaces directly outside the theatre as these are reserved for staff and cast members.

## DISABLED PARKING

There are four parking spaces reserved for Disabled Badge holders. These MUST be reserved in advance. Disabled Badge details will be asked for together with a name and car registration number. The space will then be allocated and marked with these details. Please DO NOT park in a bay unless it has been reserved for you. There are an additional two disabled bays in the Broadwaters Car Park.

## WHEELCHAIR ACCESS SEATS

The theatre has wheelchair access to the Main Auditorium only and limited seats are reserved for wheelchairs and their carers. These cannot be booked online – please contact the Box Office.

## HEARING LOOP

An induction loop is available for our hard of hearing patrons. Please turn your hearing aid to the T Position.

## CHILDREN AT THE THEATRE

Children under the age of three are not permitted to any evening performances, and there must be no unaccompanied children under 14. All children must have a valid ticket. Please check with our programme details that the show you are booking is suitable for young people. Our Box Office staff are happy to assist

# BOOKING INFORMATION

## Standard Ticket Prices – Concession prices in brackets

	Monday	Tuesday – Saturday
<b>Main House</b>	£13	£14 (£13)
<b>Studio</b>	£12	£13 (£12)

## BOOKINGS

- ◆ PLEASE NOTE THAT OUR CURRENT BOX OFFICE OPENING TIMES FOR BOOKINGS IN PERSON OR BY PHONE ARE: Monday – Friday 10.30am – 12.30pm
- ◆ Book online at [www.rosetheatre.co.uk](http://www.rosetheatre.co.uk) (processing fee of 80p per ticket).
- ◆ We now have the option of an e-ticket or tickets can be collected from the venue.
- ◆ If you require tickets to be posted, a charge of £1 is made.
- ◆ With the exception of group bookings, we do not accept reservations.

## CONCESSIONS

These are available as listed for Senior Citizens, Students and Children under 16.

## GROUP BOOKINGS

For every ten tickets purchased for the same Nonentities show, one free ticket given. Please contact the Box Office to arrange these bookings.

## GIFT VOUCHERS

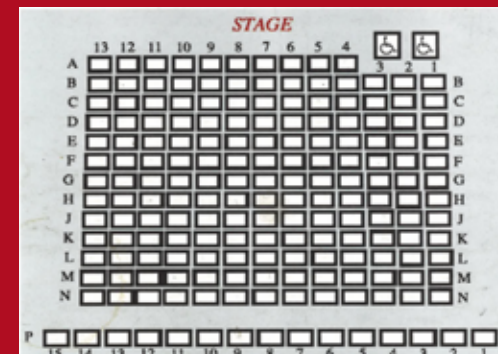
Why not treat someone with a Rose Theatre gift voucher? Available from the Box Office – They can be redeemed against any of our forthcoming shows.

## STUDIO TICKETS

Please note that you will not be given an allocated seat for Studio performances and so arrival before 7.15pm is advisable. There is no wheelchair access to the Studio which is on the First Floor.

## REFUNDS AND EXCHANGES

It is general practice that no refunds or exchanges will be made. We will endeavour to exchange tickets for another night of the same NONENTITIES production. Please contact the Box Office with queries. We reserve the right to make a transaction charge.



## AUDITORIUM

**MAIN HOUSE** Seats 183  
inc disabled seats

**STUDIO** Seats 60 Maximum

Both areas now fully air-conditioned for your comfort

Hire The Rose for Plays,  
Concerts, Meetings and Lectures  
– please ask at the Box Office for details.

# YOUR 2024/25 FORTHCOMING ATTRACTIONS AT THE ROSE

## SEPTEMBER 2024

Monday 9<sup>th</sup> – Saturday 14<sup>th</sup> September 2024

### **HOME, I'M DARLING**

By Laura Wade

The Nonentities - Main House (A)

Saturday 14<sup>th</sup> 10am-2pm

### **OPEN DAY AT THE ROSE THEATRE**

Friday 20<sup>th</sup> – Saturday 21<sup>st</sup> September 2024

### **BROADWAY TO BROADWATERS**

Kidderminster Operatic and Dramatic Society  
- Main House (A)

Friday 27<sup>th</sup> – Saturday 28<sup>th</sup> September 2024

### **FLEETWOOD MACHINE**

Main House (P)

## OCTOBER 2024

Saturday 5<sup>th</sup> October 2024

### **ADELE TRIBUTE**

Main House (P)

Monday 14<sup>th</sup> – Saturday 19<sup>th</sup> October 2024

### **9 TO 5**

Carpet Trades Musical Theatre Company  
Main House (A)

Friday 25<sup>th</sup> October 2024

### **DOUBLE BILL OF HORROR**

The Clockwork Monkey Theatre Group  
Main House (P)

## NOVEMBER 2024

Monday 28<sup>th</sup> October – Saturday 2<sup>nd</sup> November 2024

### **COPENHAGEN** by Michael Frayn

The Nonentities in the Studio (A)

Monday 25<sup>th</sup> - 30<sup>th</sup> November 2024

### **A TOMB WITH A VIEW**

by Norman Robbins

The Nonentities - Main House (A)

## DECEMBER 2024

Saturday 14<sup>th</sup> – Sunday 15<sup>th</sup> December 2024

### **SHERLOCK HOLMES AND THE TWELVE CRIMES OF CHRISTMAS**

By Rebecca Wilbrooke

Junior and Senior Groups from KRYPT  
Main House(A)

Tuesday 17<sup>th</sup> – Friday 20<sup>th</sup> December 2024

### **CHRISTMAS ENTERTAINMENT**

The Nonentities and Guests - Main House (A)

## JANUARY 2025

Monday 27<sup>th</sup> January – Saturday 1<sup>st</sup> February 2025

### **THE TURN OF THE SCREW**

By Ken Whitmore

(adapted from the novel by Henry James)  
The Nonentities - Main House (A)

BOOKING NOW OPEN –  
CONTACT THE BOX OFFICE  
FOR YOUR TICKETS

# 01562 743745

[www.rosetheatre.co.uk](http://www.rosetheatre.co.uk)

[admin@rosetheatre.co.uk](mailto:admin@rosetheatre.co.uk)

Registered Charity no 202008



## LOCATION

The Rose Theatre, Chester Road North  
Broadwaters, Kidderminster  
Worcestershire, DY10 2RX

